

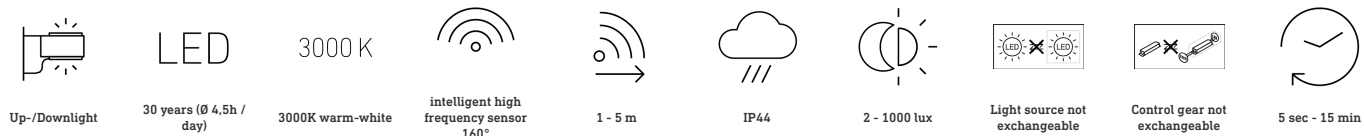
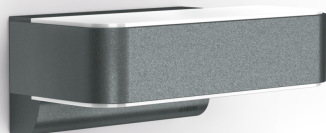
Sensor-switched LED outdoor light

L 810 SC

Anthracite

EAN 4007841 065706

Article number 065706



Function description

The most modern outdoor light in the world. Designer sensor-switched outdoor light L 810 SC with invisible high-frequency sensor, ideal for building entrances and fronts of buildings, 9,8 W STEINEL LED lighting system, 679 lm, 160° coverage angle, reach from 1 - 5 m, for stylish up and downlighting, includes soft light start and optional manual override for 4 hours. Wirelessly interconnectable by Bluetooth and adjustable and controllable via free app.

Technical specifications

Dimensions (L x W x H)	145 x 230 x 91 mm	Reach, tangential	r = 5 m (35 m ²)
With lamp	Yes, LED lamp	Photo-cell controller	Yes
Manufacturer's Warranty	3 years	Transmitter range	30 m
Settings via	App, Bluetooth	Transmitter power	< 1 mW
With remote control	No	Luminous flux total product	679 lm
Version	Anthracite	Measured luminous flux (360°)	679 lm
PU1, EAN	4007841065706	Total product efficiency	69 lm/W
Application, place	Outdoors	Colour temperature	3000 K
Application, room	garden, front door, courtyard & driveway, all round the building, terrace / balcony	Lamp	LED cannot be replaced
Colour	Anthracite	Service life LED L70B50 (25°)	> 60000 h
includes sheet of self-adhesive numbers	No	Base	without
Installation site	wall	LED cooling system	Active and Passive Thermo Control
Impact resistance	IK03	Soft light start	Yes
IP-rating	IP44	Continuous light	selectable, 4h
Protection class	II	Functions	Motions sensor
		Twilight setting	2 – 2000 lx
		Time setting	5 s – 60 Min.

<https://www.steinel.de>

Subject to technical modifications

01.2023 Page 1 from 3

Sensor-switched LED outdoor light

L 810 SC

Anthracite

EAN 4007841 065706

Article number 065706



Technical specifications

Ambient temperature	-20 – 40 °C
Housing material	Aluminium
Cover material	Plastic, opal
Mains power supply	220 – 240 V / 50 – 60 Hz
Output	9,8 W
Mounting height max.	2,50 m
Slave modeselectable	Yes
Sneak-by guard	Yes
Capability of masking out individual segments	No
Electronic scalability	Yes
Mechanical scalability	No
Reach, detail	Detection zone adjustable on 2 axes
Reach, radial	r = 5 m (35 m ²)

Basic light level function	Yes
Basic light level function time	1-30 min, all night
Main light adjustable	50 - 100 %
Interconnection	Yes
Type of interconnection	Master/master
Basic light level function in per cent	10 – 50 %
Basic light level function percentage, from	10 %
Basic light level function percentage, up to	50 %
Interconnection via	Bluetooth
Colour Rendering Index CRI	= 82
Optimum mounting height	2 m

Sensor-switched LED outdoor light

L 810 SC

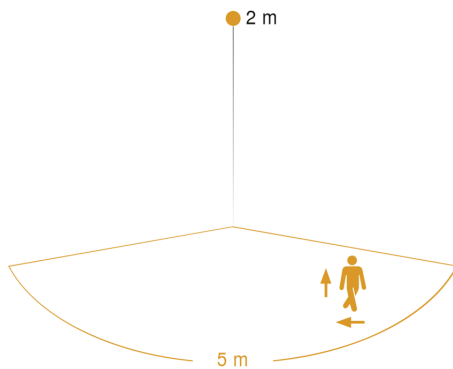
Anthracite

EAN 4007841 065706

Article number 065706



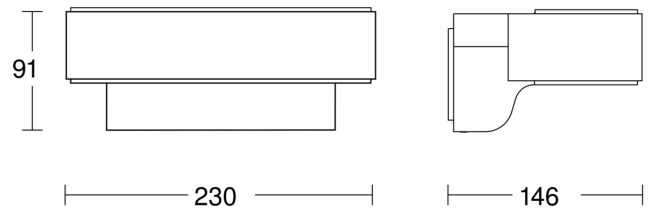
Detection Zone



Mögliche Montagehöhe: 1,80 m – 2,50 m

Orange: radial und tangential

Dimension Drawing



Circuit diagram Bluetooth

