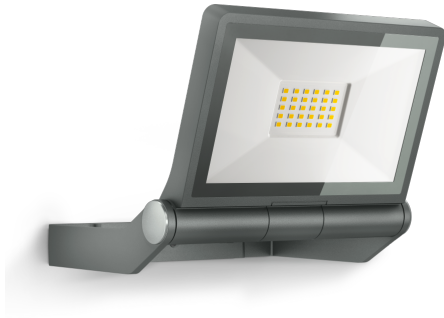


LED floodlight without sensor

# XLED ONE

Anthracite  
EAN 4007841 065201  
Article number 065201



LED

long life LED  
50.000 h

3000 K

3000K warm-white



IP44



Panel 180° vertical



indoor/outdoor  
light



energy saving

3 years

manufacturer's  
warranty  
steinel.de/  
garantie3y



Light source not  
exchangeable



Control gear not  
exchangeable



CE

## Function description

Astonishingly efficient. Extra-long service life. The XLED ONE wall and ceiling spot impresses with modern LED technology and provides 3000 K and 2050 lm of warm white light from an energy-saving 17,8 W. The aluminium panel can be tilted through 180°. With high-quality and powerful reflector as well as long-life LEDs (30 years).

## Technical specifications

Dimensions (L x W x H)	173 x 229 x 195 mm	Mains power supply	220 – 240 V / 50 – 60 Hz
With lamp	Yes, STEINEL LED system	Photo-cell controller	No
With motion detector	No	Luminous flux total product	2050 lm
Manufacturer's Warranty	3 years	Measured luminous flux (360°)	2050 lm
Version	Anthracite	Total product efficiency	115 lm/W
PU1, EAN	4007841065201	Colour temperature	3000 K
Application, place	Outdoors	Colour variation LED	SDCM3
Application, room	outdoors, all round the building, courtyard & driveway	Lamp	LED cannot be replaced
Installation site	wall, ceiling	LED life expectancy (max. °C)	50000 h
Installation	Wall, Ceiling, Surface wiring	Service life LED L70B50 (25°)	> 36000 h
Impact resistance	IK03	Drop in luminous flux in accordance with LM80	L70B10
IP-rating	IP44	LED cooling system	Passive Thermo Control
Protection class	I	Basic light level function	No
Ambient temperature	-20 – 40 °C	Output	17,8 W
Housing material	Aluminium	Colour Rendering Index CRI	= 80
Cover material	Glass transparent		

<https://www.steinell.de>

Subject to technical modifications

01.2023 Page 1 from 2

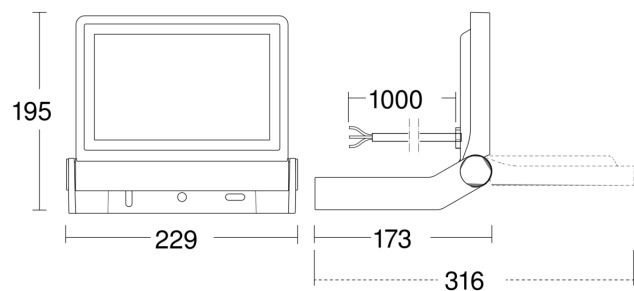
LED floodlight without sensor

# XLED ONE

Anthracite  
EAN 4007841 065201  
Article number 065201



## Dimension Drawing



## Circuit diagram

